

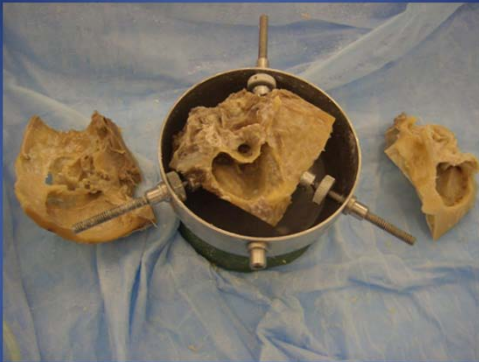
2013 Temporal Bone Dissection

TSGH, ENT Department

郭昭吟 住院醫師 王智弘 主治醫師

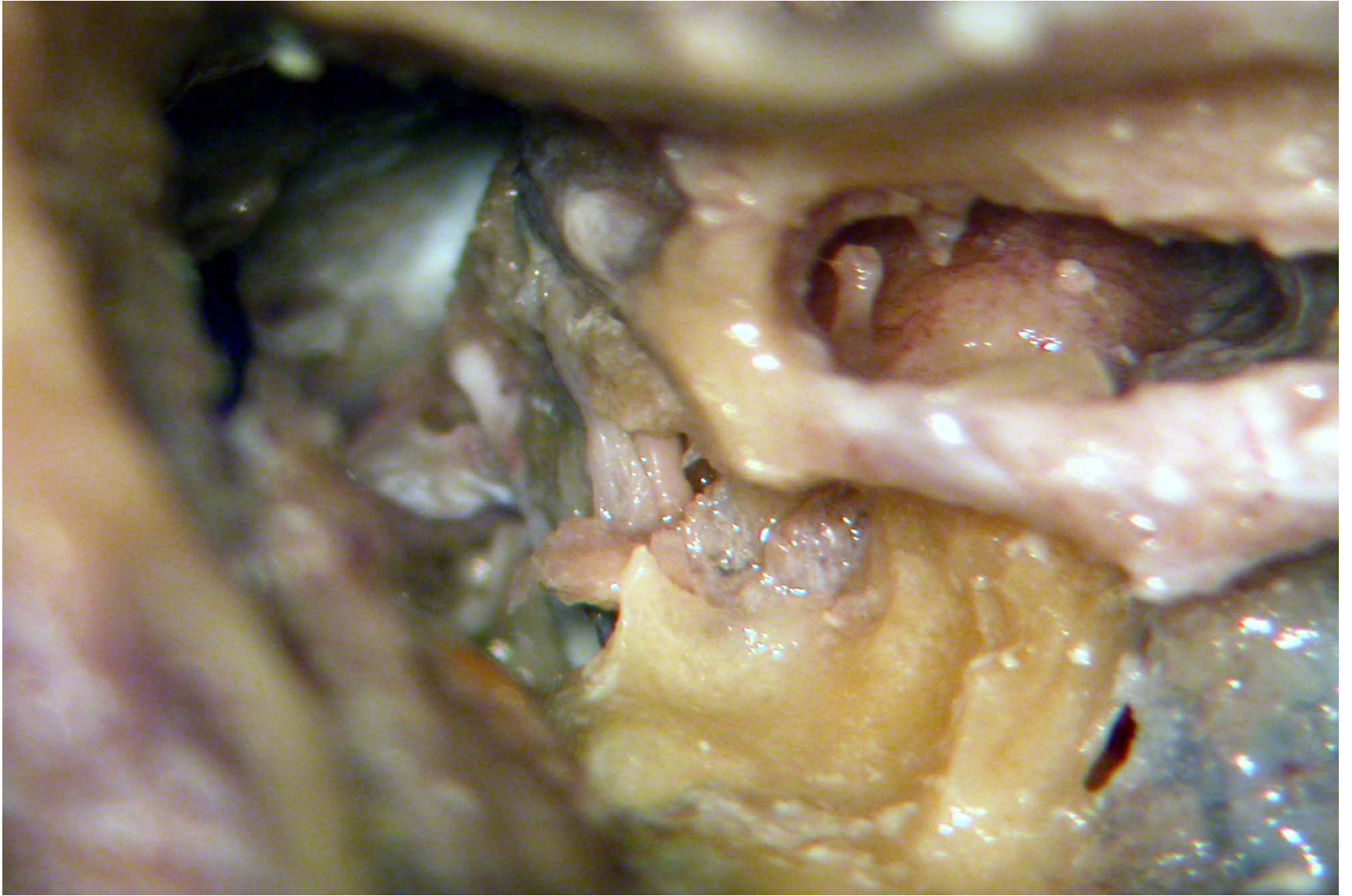
2013.04.23

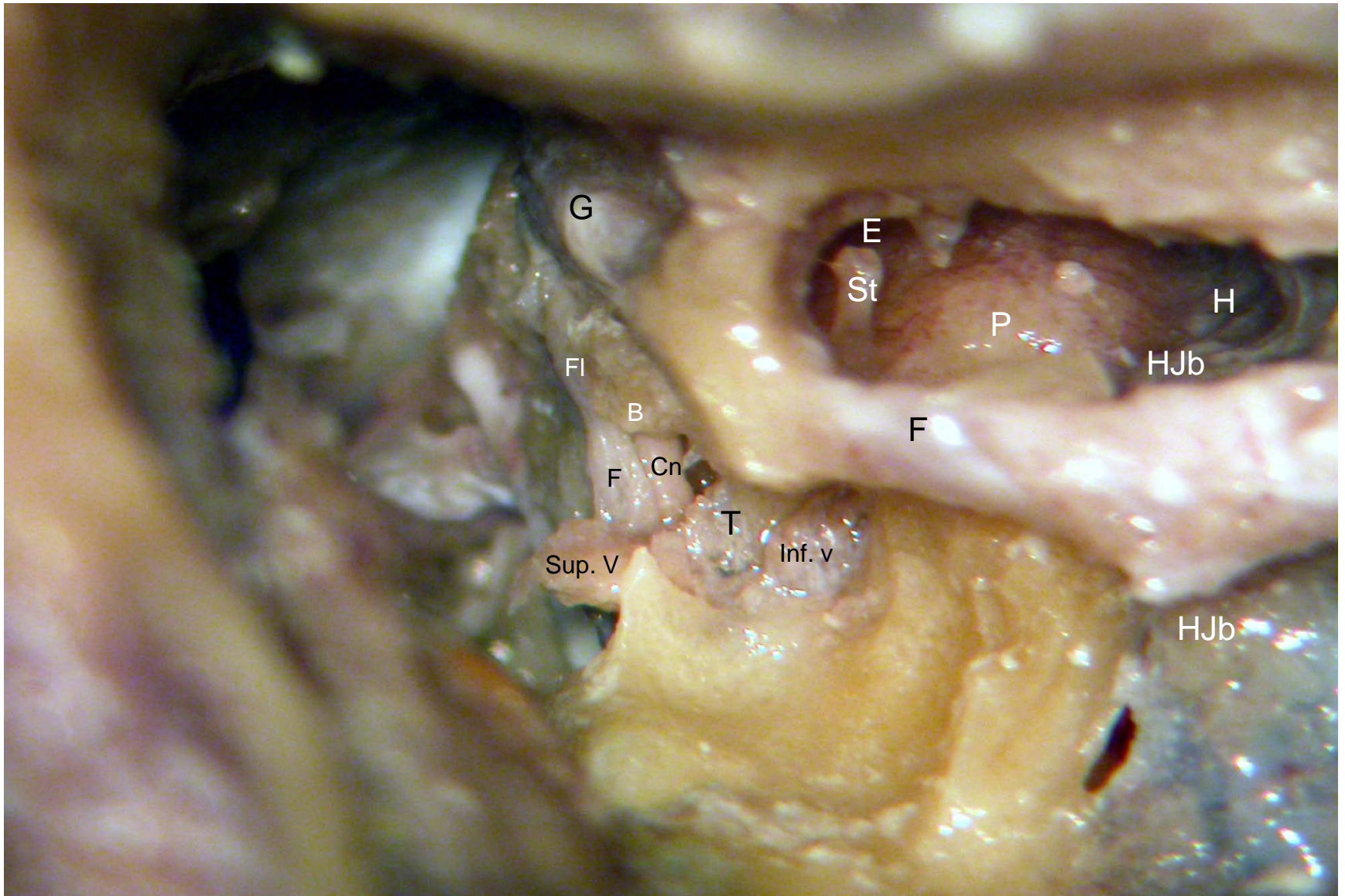
2013 第二屆三軍總醫院耳鼻喉頭頸外科部顛骨手術研習課程
2nd TSGH Temporal Bone Surgical Dissection Courses 2013



時間: 2013年4月15日 - 4月19日
地點: 國防醫學院解剖實驗室
主辦單位: 三軍總醫院耳鼻喉頭頸外科部
國防醫學院耳鼻喉學科
國防醫學院生物及解剖學科
指導老師: 王智弘、陳信傑、施政坪

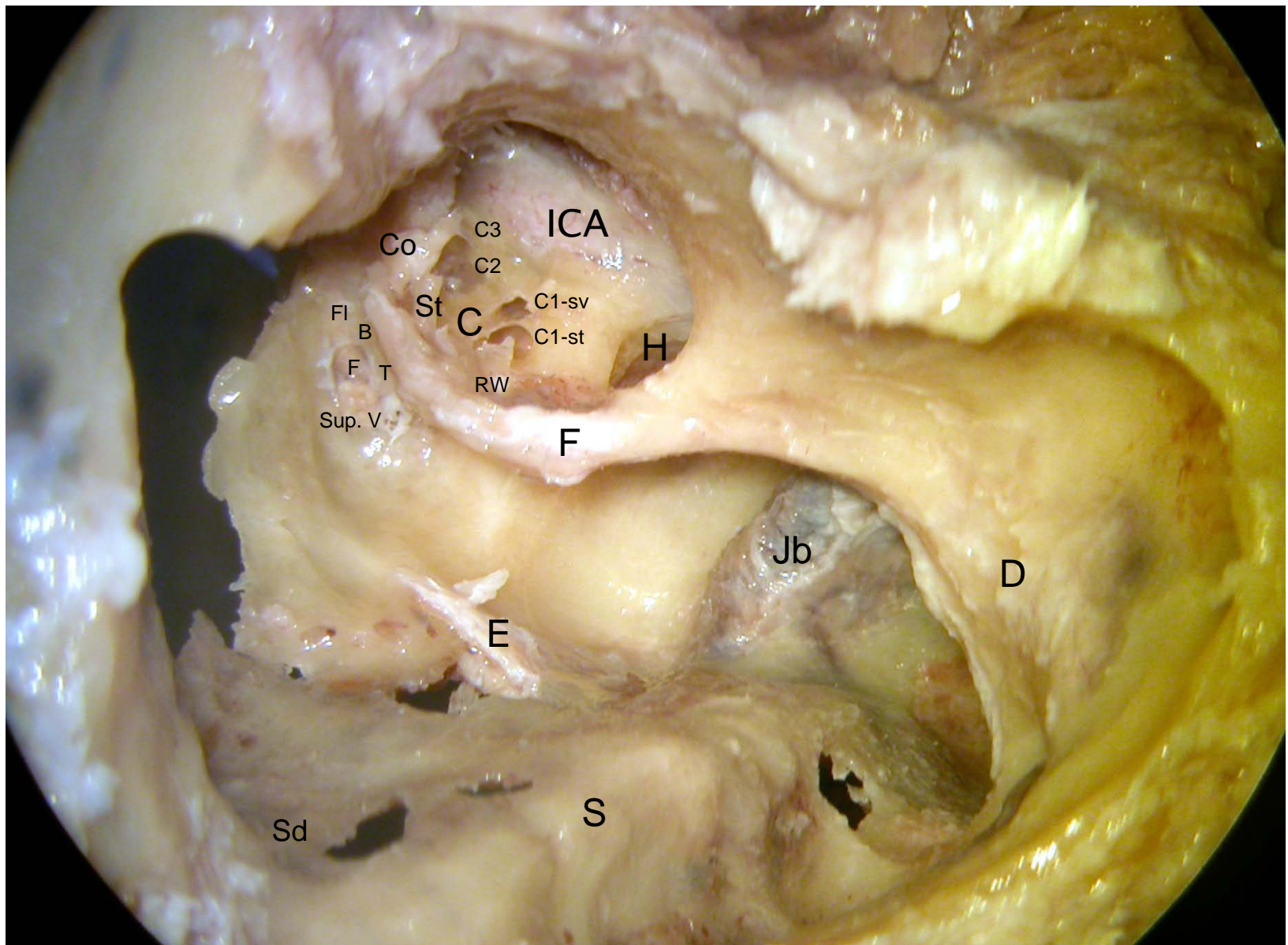




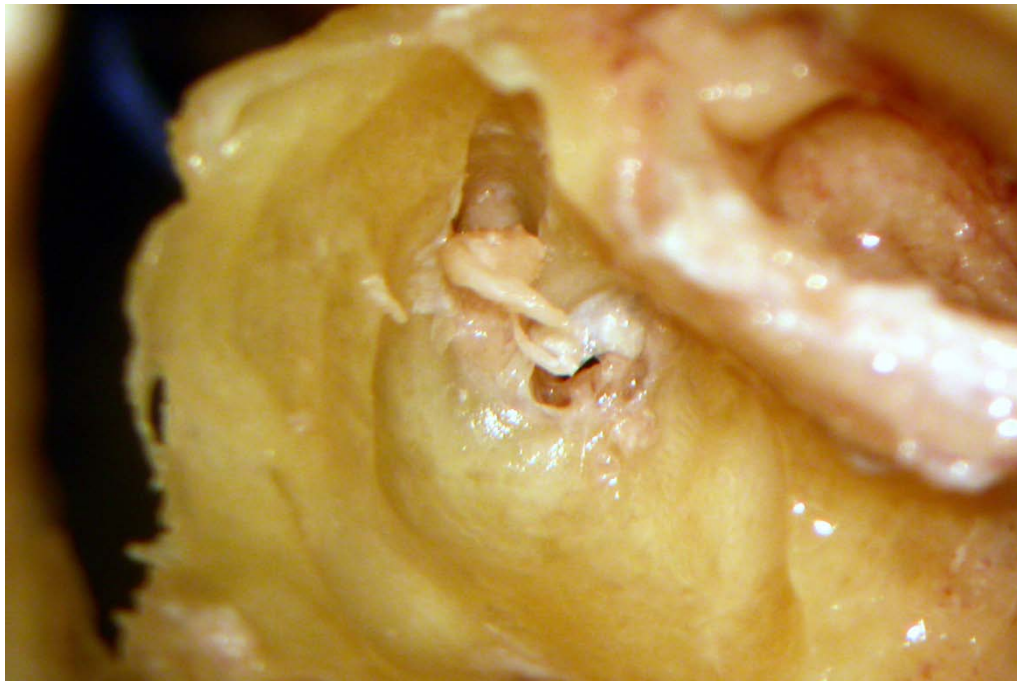
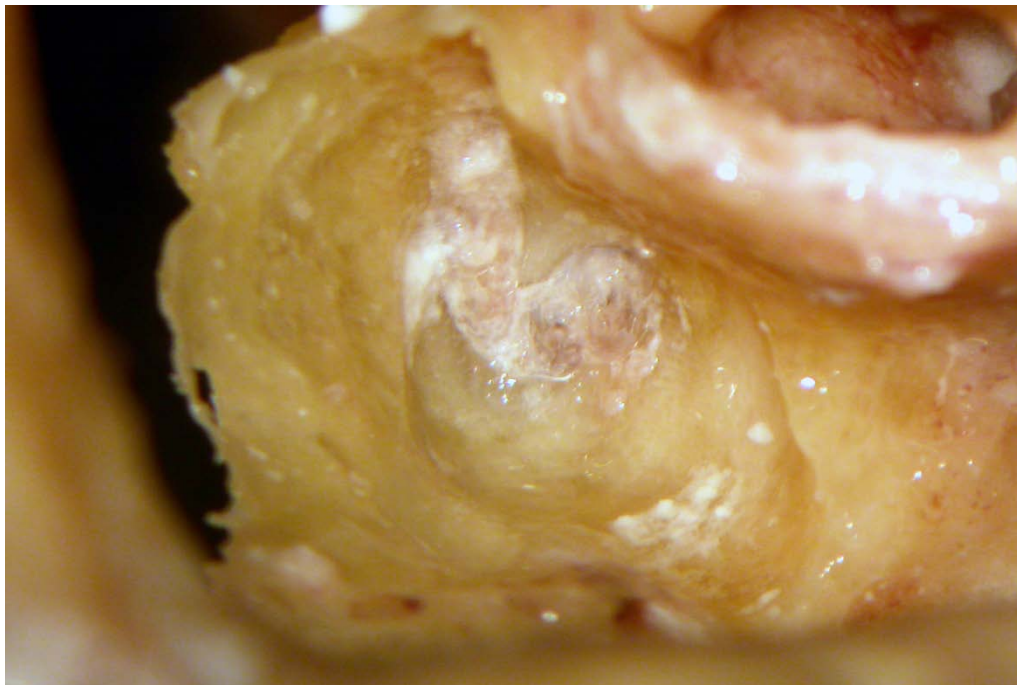


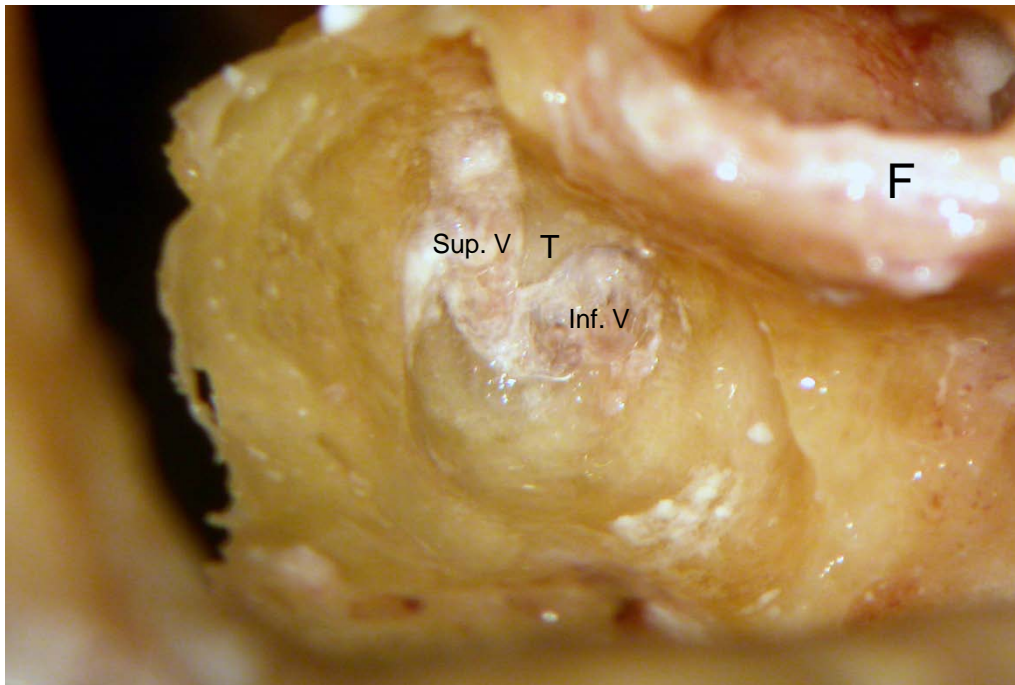
B: Bill's bar; **Cn:** cochlear nerve; **E:** E-tube orifice; **F:** facial nerve; **FI:** facial nerve, labyrinth segment; **H:** hypotympanium; **P:** promontary; **HJb:** High jugular bulb; **Inf. V:** inferior vestibular nerve; **St:** stapes; **Sup. V:** superior vestibular nerve; **T:** transverse crest;



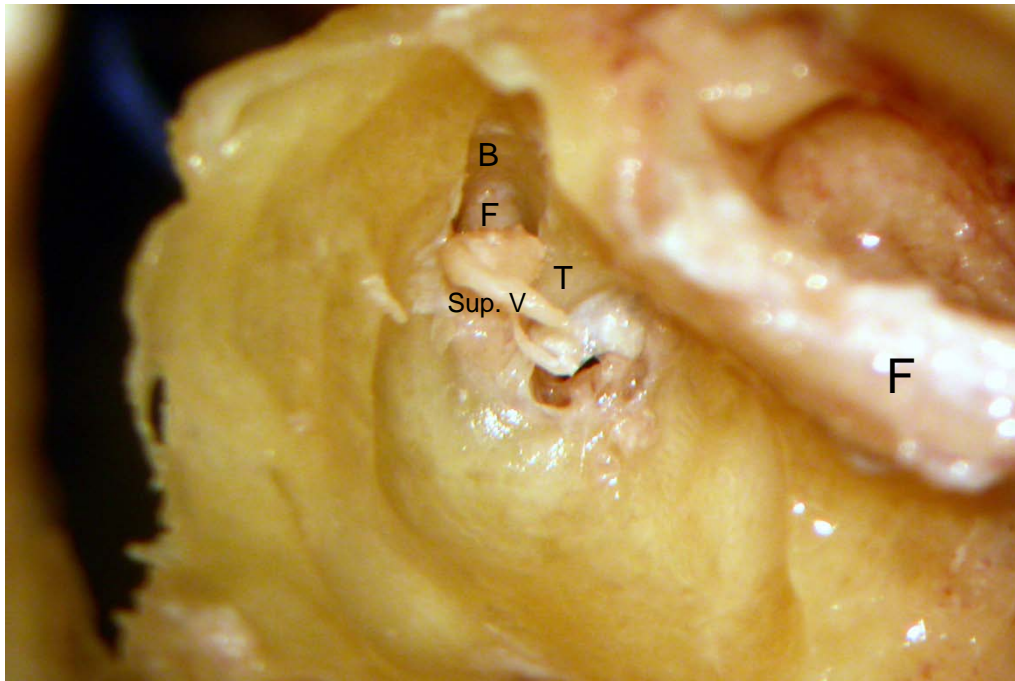


B: Bill's bar; **C:** cochlea, **c1**-first turn, **c2**-2nd turn, **c3**-apex turn, **st**-scala tympani, **sv**-scala vestibule; **Co:** cochleariform process; **D:** digastric ridge; **E:** endolymphatic sac; **F:** facial nerve; **FI:** facial nerve, labyrinth segment; **H:** hypotympanium; **ICA:** internal carotid artery; **Jb:** jugular bulb; **RW:** round window membrane; **S:** sigmoid sinus; **Sa:** sinodural angle; **St:** stapes; **Sup. V:** superior vestibular nerve; **T:** transverse crest;

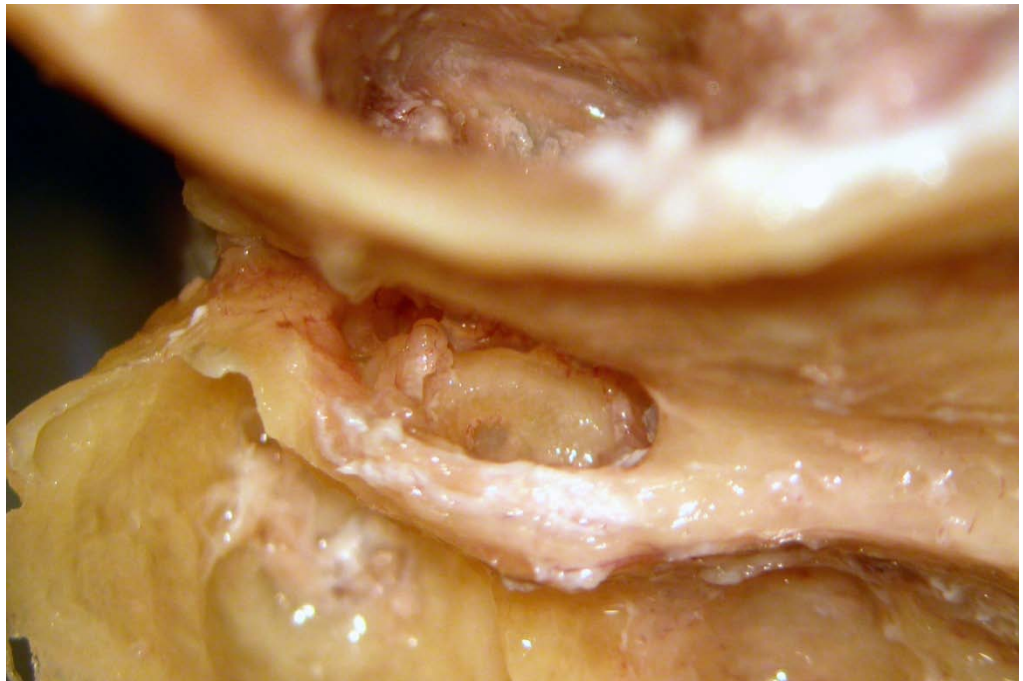
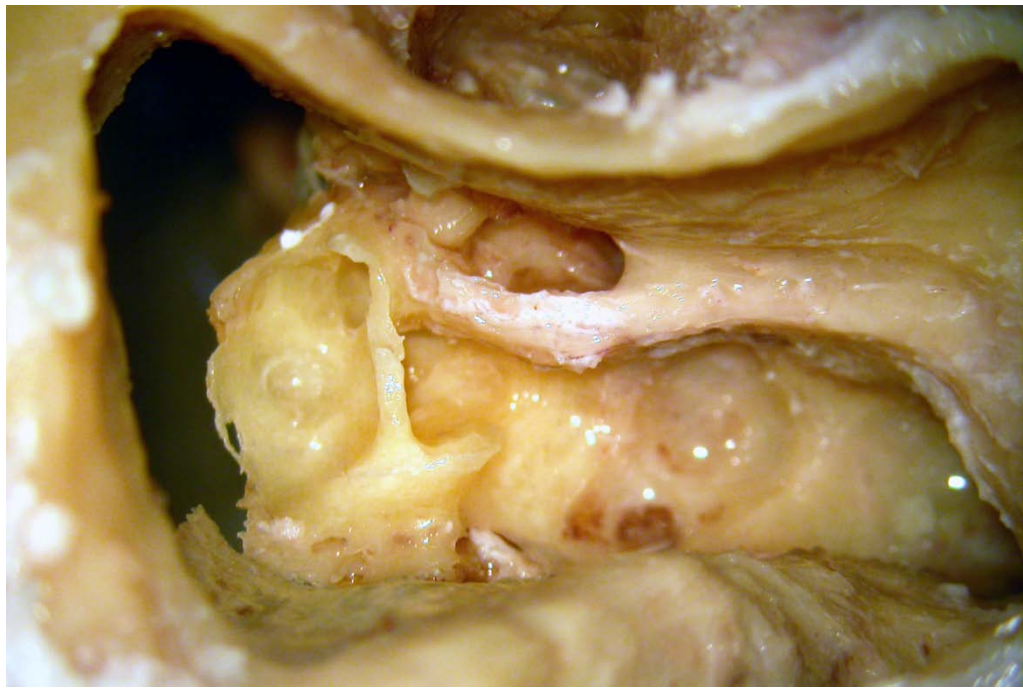


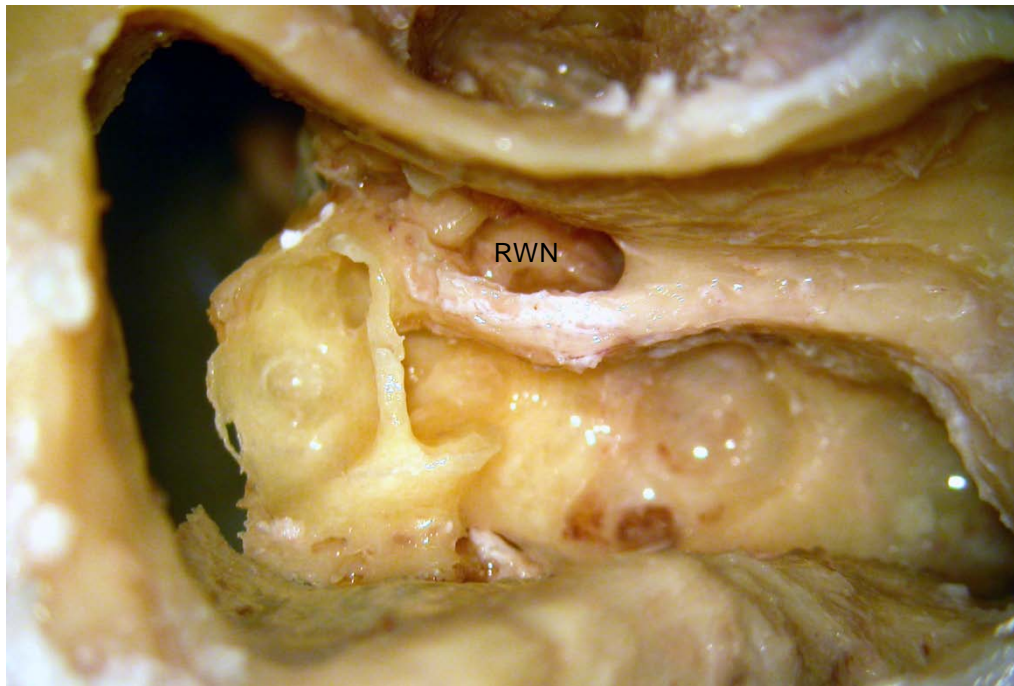


F: facial nerve
Inf. V: inferior vestibular nerve
Sup. V: superior vestibular nerve
T: transverse crest

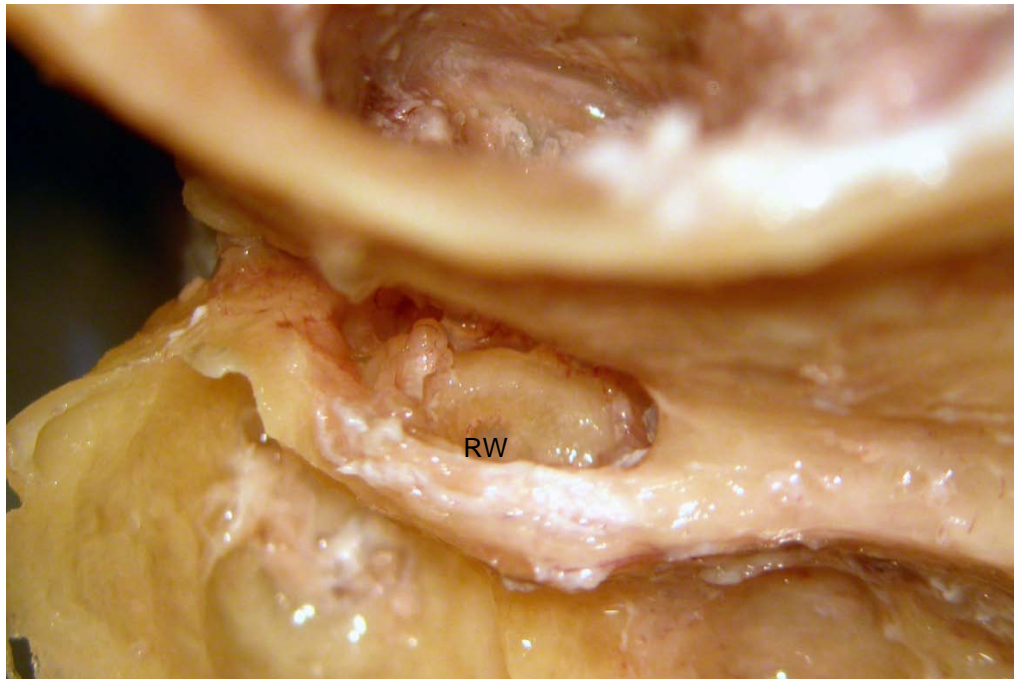


B: Bill's bar (vertical crest)

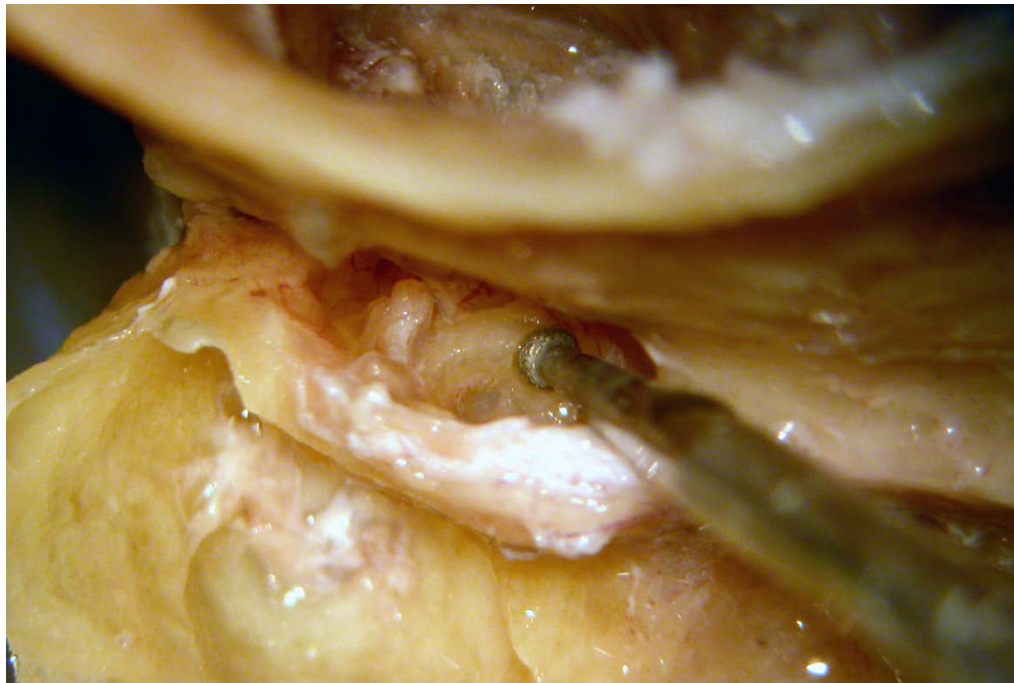
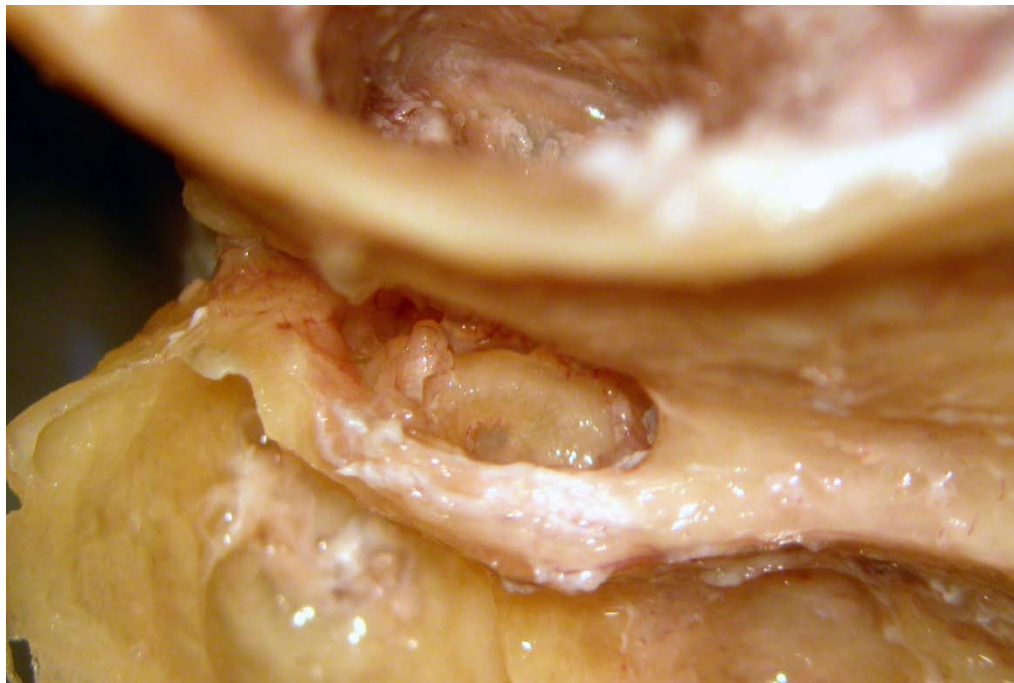


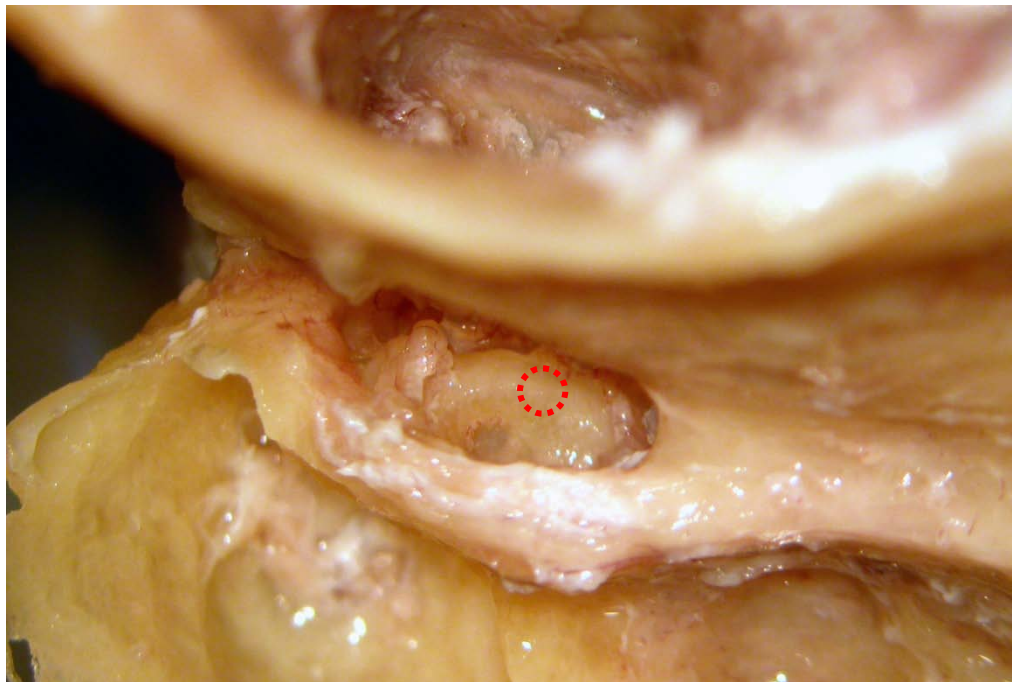



RWN: round window niche




RW: round window membrane

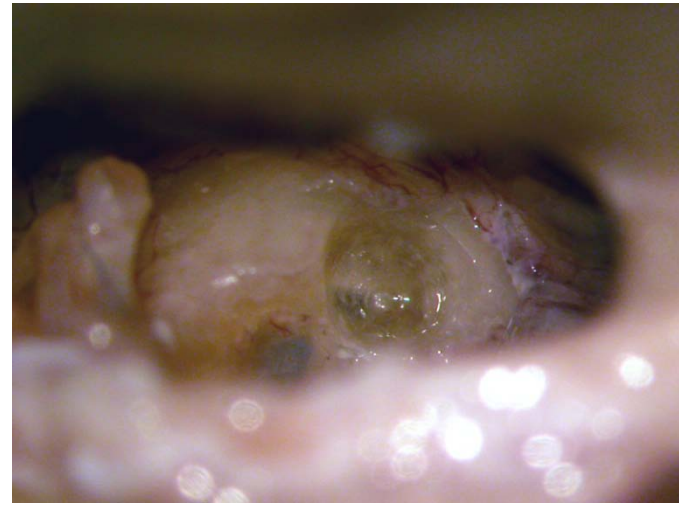
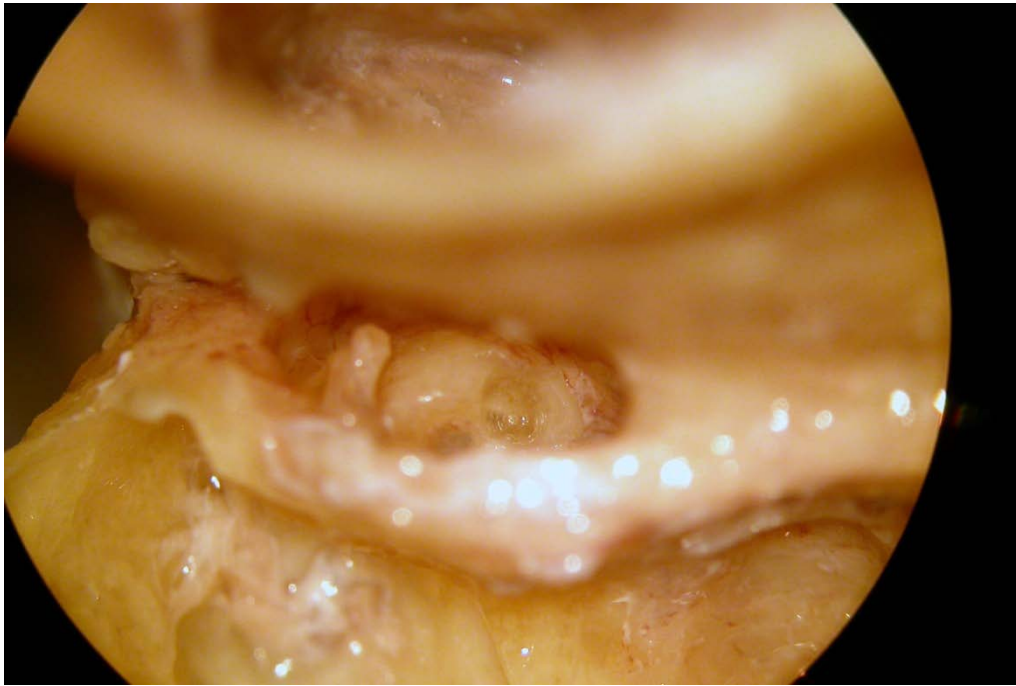


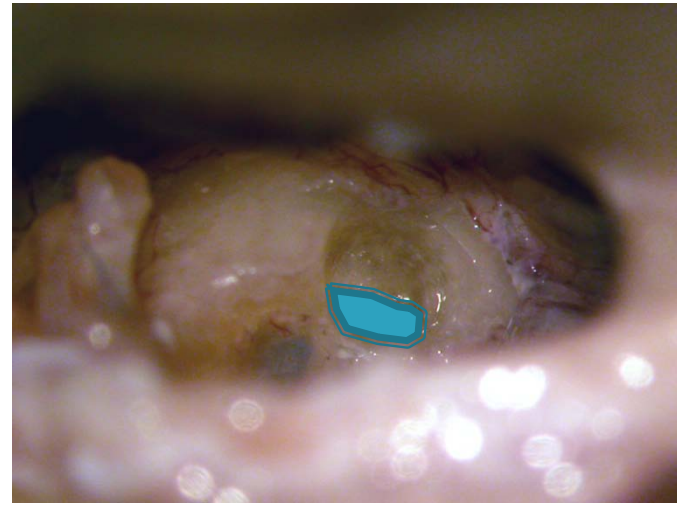
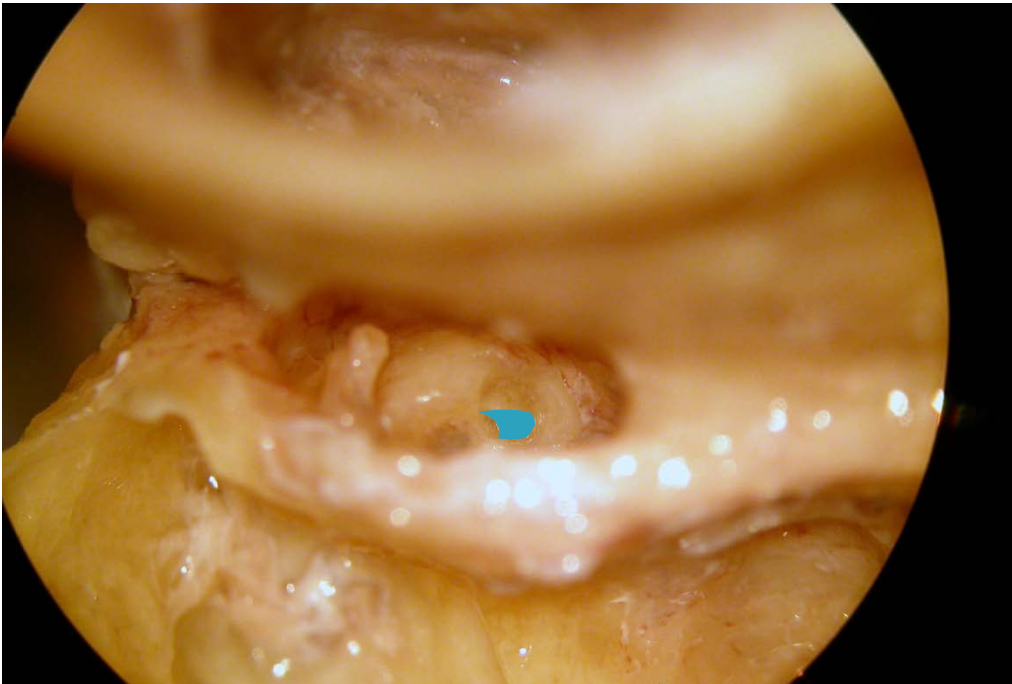


 : **cochleostomy**, inferior and anterior to the round window membrane

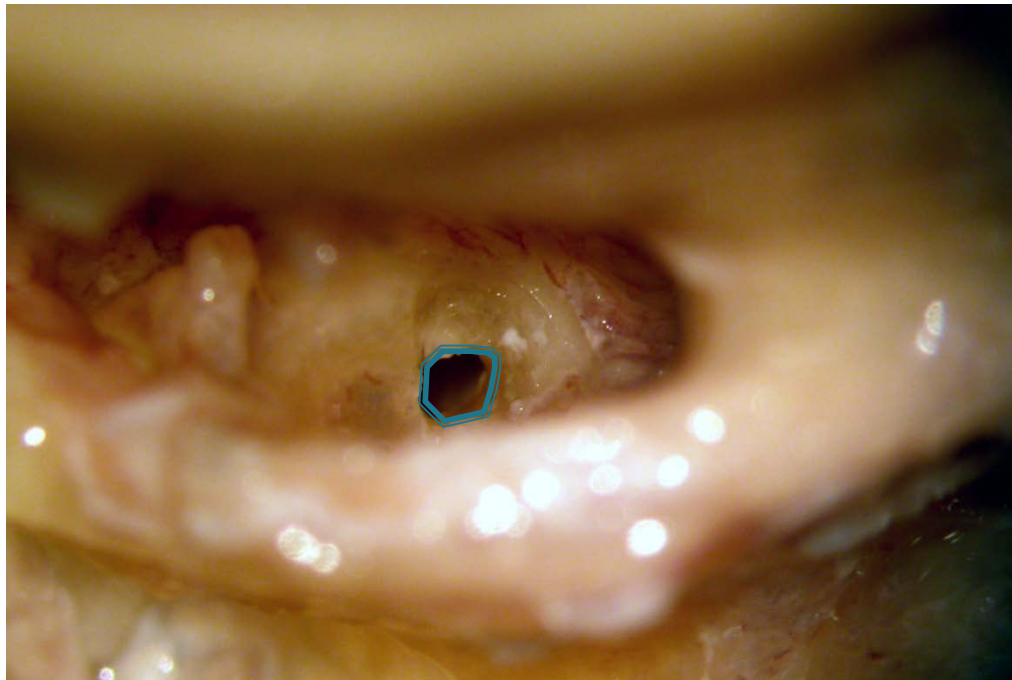


 **Drilling:** The burr is positioned toward the stapes

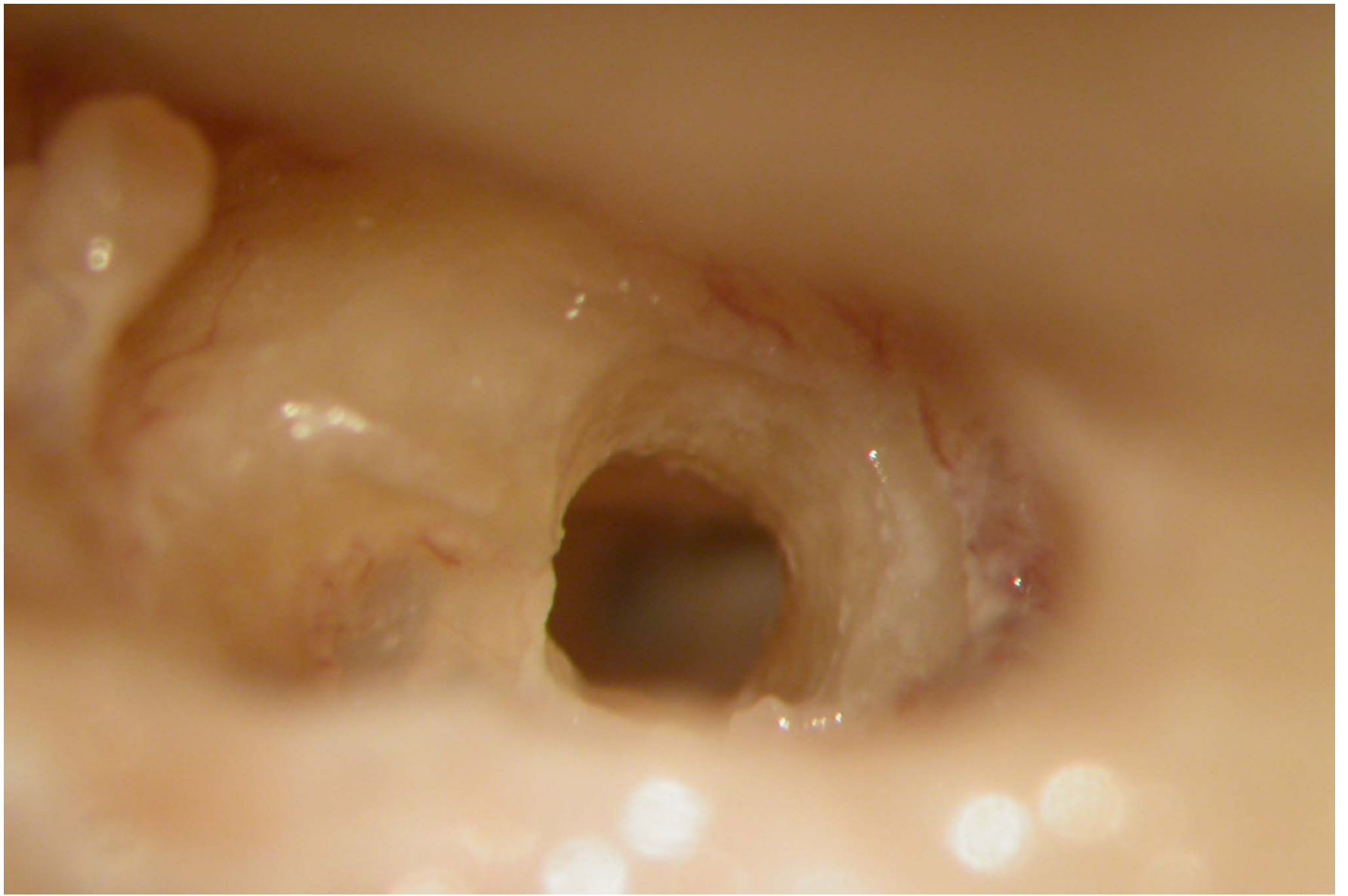


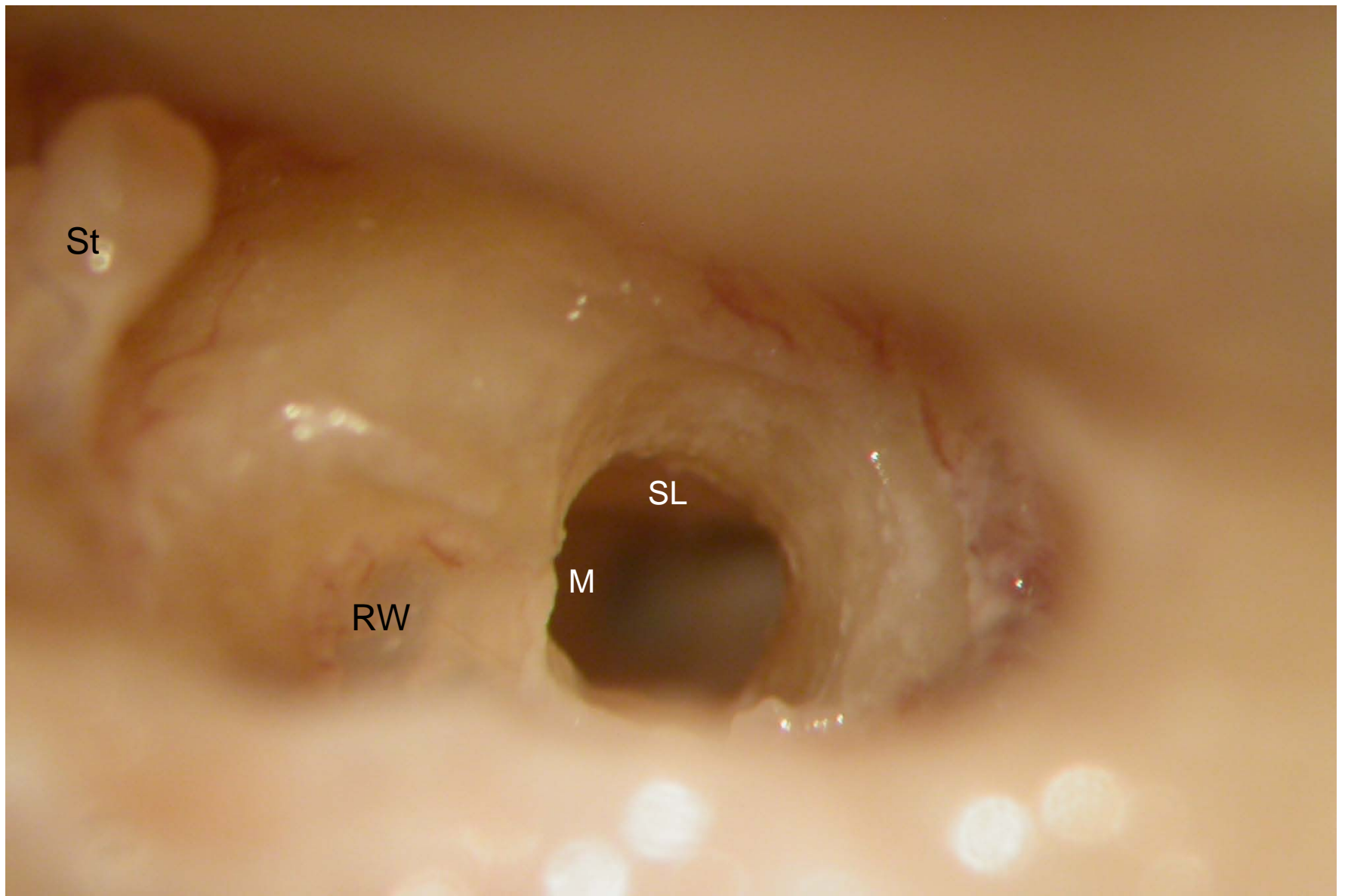


: a small hole is drilled through the inferior portion of cochleostomy



: gradually enlarge the hole by drilling superiorly, inferiorly, and laterally.





RW: round window membrane; **M:** modioli; **SL:** spiral lamina; **St:** stapes;